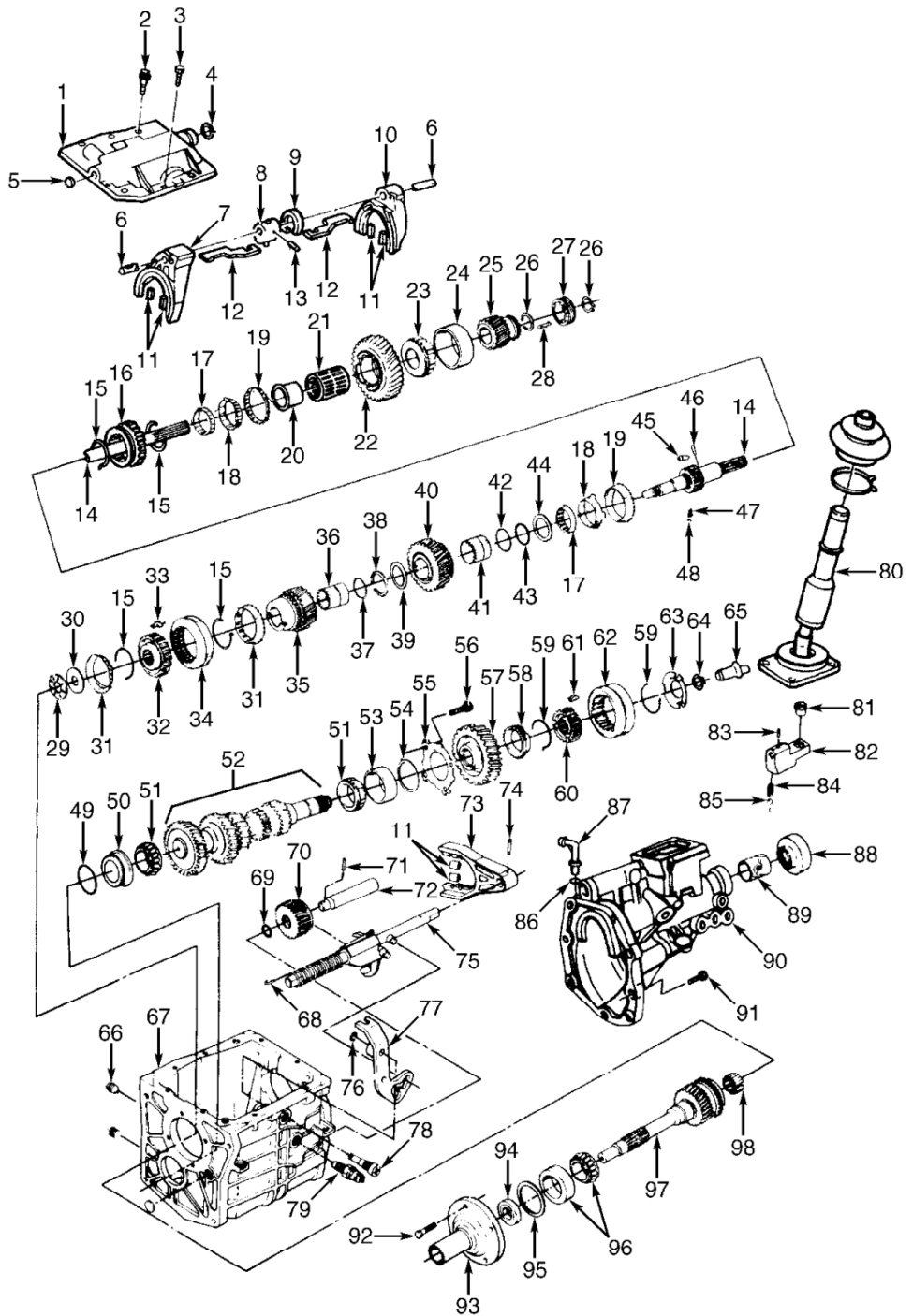


1. Top Cover
2. Alignment Dowel (Bolt)
3. Bolt
4. "O" Ring Seal
5. Shift Rail Plug
6. Shift Rail
7. 3rd & 4th Shift Fork
8. Selector Arm
9. Gear Select Interlock Plate
10. 1st & 2nd Shift Fork
11. Nylon Shift Fork Insert
12. Selector Arm Plate
13. Selector Arm Roll Pin
14. Output Shaft
15. Synchronizer Spring
16. Reverse Sliding Gear
17. 1st & 2nd Synchronizer Inner Cone
18. 1st & 2nd Synchronizer Outer Cone
19. 1st & 2nd Synchronizer Ring
20. 1st Gear Bearing Sleeve
21. 1st Gear Bearing
22. 1st Speed Gear
23. Output Shaft Rear Bearing
24. Output Shaft Rear Bearing Race
25. 5th Speed Driven Gear
26. Snap Ring
27. Speedometer Drive Gear
28. Speedometer Drive Gear Retaining Clip
29. Output Shaft Thrust Bearing
30. Output Shaft Thrust Bearing Race
31. 3rd & 4th Synchronizer Ring
32. 3rd & 4th Synchronizer Hub
33. Synchronizer Insert
34. 3rd & 4th Synchronizer Sleeve
35. 3rd Speed Gear
36. 3rd Gear Bearing
37. 3rd Gear Bearing Spacer
38. 2nd Gear Thrust Bearing Snap Ring
39. 2nd Gear Thrust Washer
40. 2nd Speed Gear
41. 2nd Gear Bearing
42. 2nd Gear Bearing Spacer
43. 2nd Synchronizer Spiral Retaining Ring
44. 2nd Synchronizer Thrust Washer
45. 1st & 2nd Synchronizer Insert
46. 1st Speed Bearing Sleeve Locating Pin
47. Detent Spring
48. Detent Ball
49. Bearing Race "O" Ring
50. Front Countershaft Bearing Race
51. Countershaft Bearing
52. Countershaft Gear Cluster
53. Countershaft Rear Race
54. Countershaft Bearing Adjustment Shim
55. Countershaft Retainer
56. Countershaft Retainer Bolt
57. 5th Speed Drive Gear
58. 5th Synchronizer Ring
59. 5th Synchronizer Spring
60. 5th Synchronizer Hub
61. 5th Synchronizer Insert
62. 5th Synchronizer Sleeve
63. 5th Synchronizer Insert Retainer
64. 5th Synchronizer Retainer Snap Ring
65. Transmission Oiling Funnel
66. Fill & Drain Plug
67. Transmission Case
68. Reverse Lever Return Spring
69. Reverse Idler "O" Ring
70. Reverse Idler Gear
71. Reverse Idler Roll Pin
72. Reverse Idler Shaft
73. 5th Shift Fork
74. Shift Fork Roll Pin
75. 5th & Reverse Shift Rail
76. 5th & Reverse Lever Spring Clip Retainer
77. 5th & Reverse Shift Lever
78. 5th & Reverse Shift Lever Pivot Bolt
79. Back-Up Light Switch
80. Transmission Shift Lever
81. Shift Lever Damper Sleeve
82. Offset Shift Lever
83. Offset Lever Roll Pin
84. Detent Spring
85. Detent Ball
86. Extension Housing Vent "O" Ring
87. Extension Housing Vent
88. Extension Housing Rear Oil Seal
89. Extension Housing Bushing
90. Extension Housing
91. Extension Housing Bolt
92. Input Shaft Bearing Retainer Bolt
93. Input Shaft Bearing Retainer
94. Input Shaft Bearing Retainer Oil Seal
95. Output Shaft Bearing Adjustment Shim
96. Front Main Drive Gear Bearing
97. Input Shaft
98. Main Drive Gear Pilot Roller Bearing



BK149WS Kit Contents

OUR ITEM NR	QTY	MFG ITEM NR	MFG DESC
1332-091-002	1	1332-14	5TH SYNCHRO RING
1352-591-003	2	1352-591-003	3-4 SYNCHRO RINGS
25821	1	25821	REAR MAINSHAFT BEARING RACE
25877	1	25877	REAR MAINSHAFT BEARING
AS110	1	AS110	O-RING. SPEEDO INNER FORD
AS115	1	AS115	O-RING. SPEEDO CABLE/ BULLET
AS117	1	AS117	O-RING. TOP TO TAIL HOUSING
CR12363	1	CR12363	INPUT SEAL
CR15041	1	CR15041	REAR SEAL
K5	1	SET5	INPUT BEARING
K6	1	SET6	REAR COUNTER BEARING
LM67010-BCE	1	LM67010BCE	FRONT COUNTER BEARING RACE
LM67048	1	LM67048	FRONT COUNTER BEARING
SP5-50W	1	SP1105-50A	SMALL PARTS KIT
TBKT11875	2	TBKT11875	1-2 SYNCHRO RINGS